

Dragon Expert Advisor v13.67

MANUAL FILE

dragonexpert99@gmail.com

DISCLAIMER

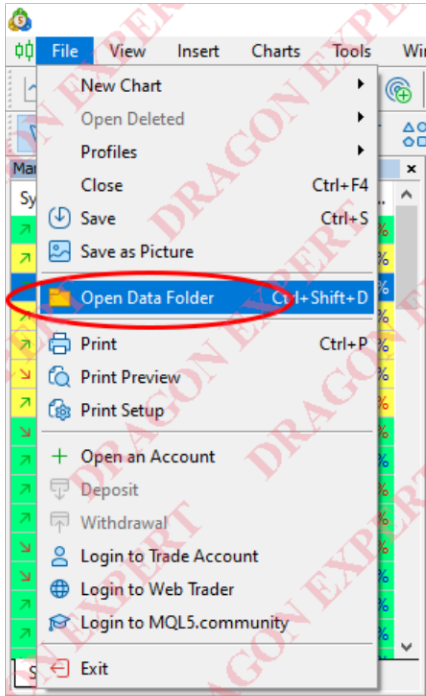
High Risk Warning. The Expert Advisor use martingales that carries a high level of risk, and may not be suitable for everybody. Before deciding to use the Expert Advisor you should carefully consider your trading objectives, level of experience, and risk appetite. The possibility exists that you could sustain a loss of some or all of your initial trading capital and therefore you should not trade with money that you cannot afford to lose.

CFTC RULE 4.41 - Hypothetical or simulated performance results have certain inherent limitations. Unlike an actual performance record, simulated results do not represent actual trading. Also, since the trades have not actually been executed, the results may have under- or over-compensated for the impact, if any, of certain market factors, such as lack of liquidity. Simulated trading programs in general are also subject to the fact that they are designed with the benefit of hindsight. No representation is being made that any account will or is likely to achieve profits or losses similar to those shown.

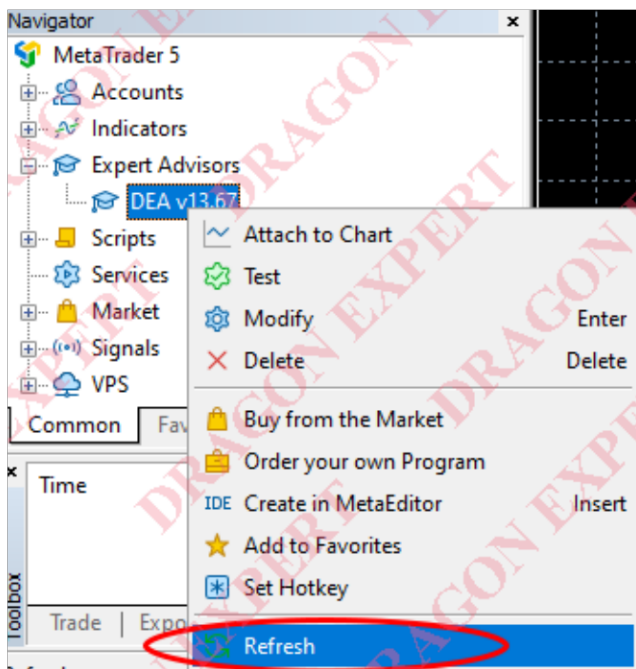
You should be aware that trading Foreign Exchange carries a high level of risk, and you can lose some or all of your investment. The high degree of leverage that is often obtainable in forex trading, can work against you as well as for you. The use of leverage can lead to large losses as well as large gains. You must be aware of the risks and be willing to accept them in order to invest in the forex markets. Don't trade with money you can't afford to lose. We will not be liable or responsible for any loss or damage due to any reason. By using DRAGON EXPERT ADVISOR, you acknowledge that you are familiar with these risks and that you are solely responsible for the outcomes of your decisions. We accept no liability whatsoever for any direct or consequential loss arising from the use of this product. It's to be noted carefully in this respect, that past results are not necessarily indicative of future performance.

INSTALLATION

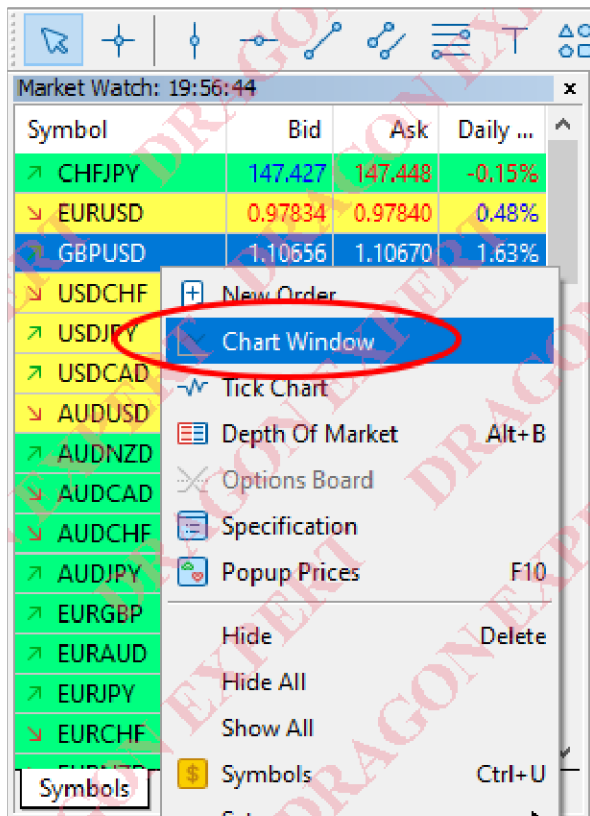
1. Download attachment Dragon Expert v13.67.ex5.
2. Open your metatrader 5 (Run as administrator).
3. Go to File Menu -> Open Data Folder.



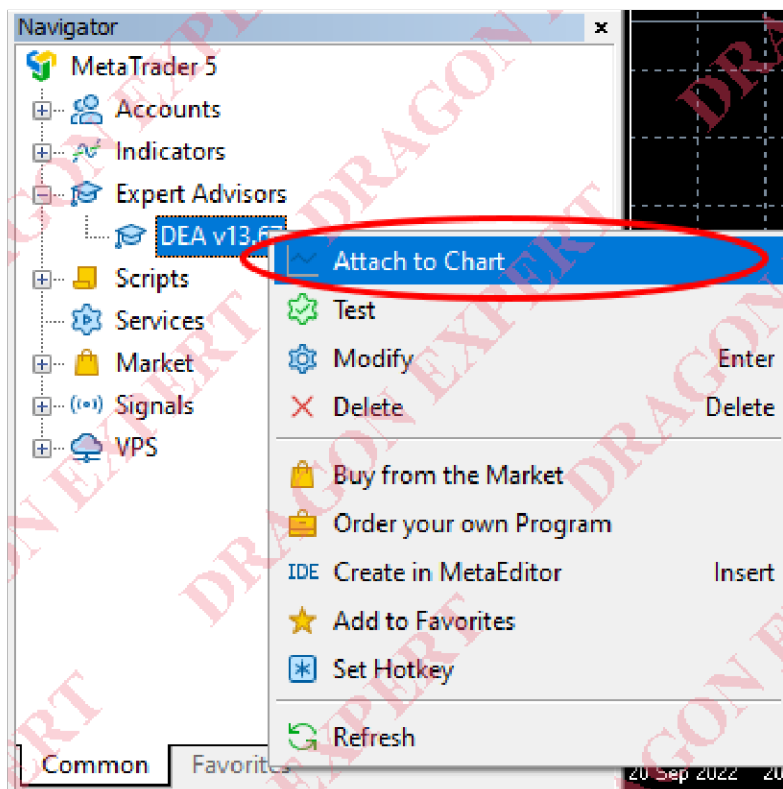
4. Copy Dragon Expert.ex5 to [your mt5 Data Folder] -> MQL5 -> Experts Folder
5. Go back or open your metatrader application, and refresh by right-clicking on the Expert Advisor Section and click "Refresh" in Navigator Tab.



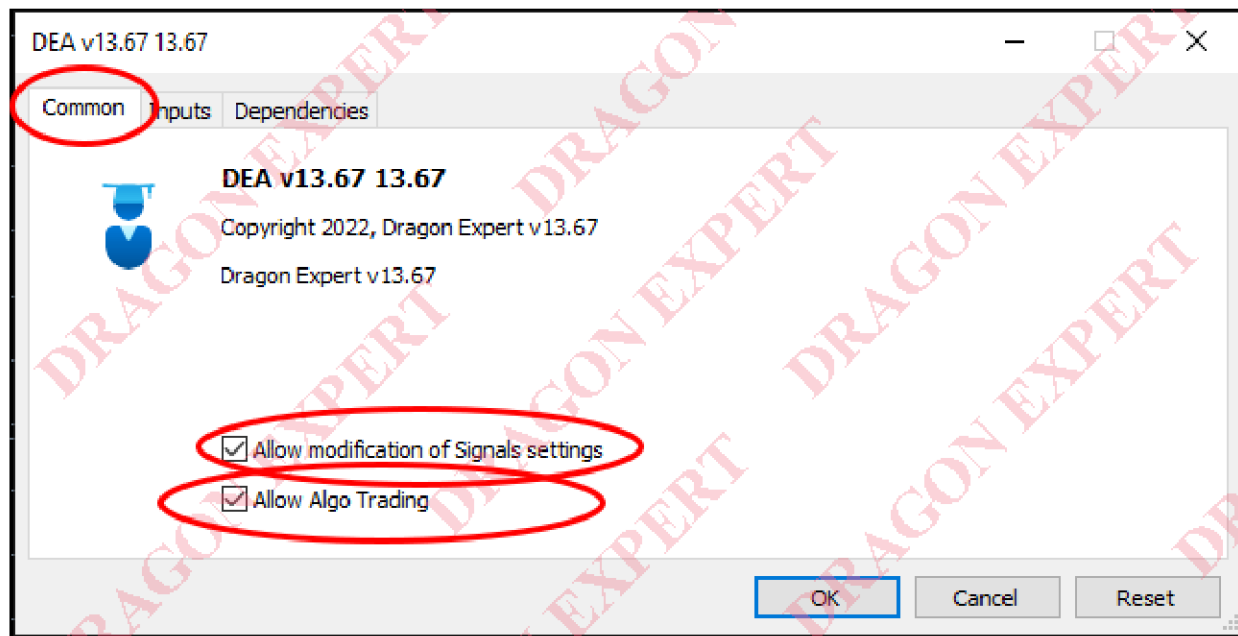
6. Open Chart trading by right clicking at 1 pair currency in market watch, choose "+ Chart Window"



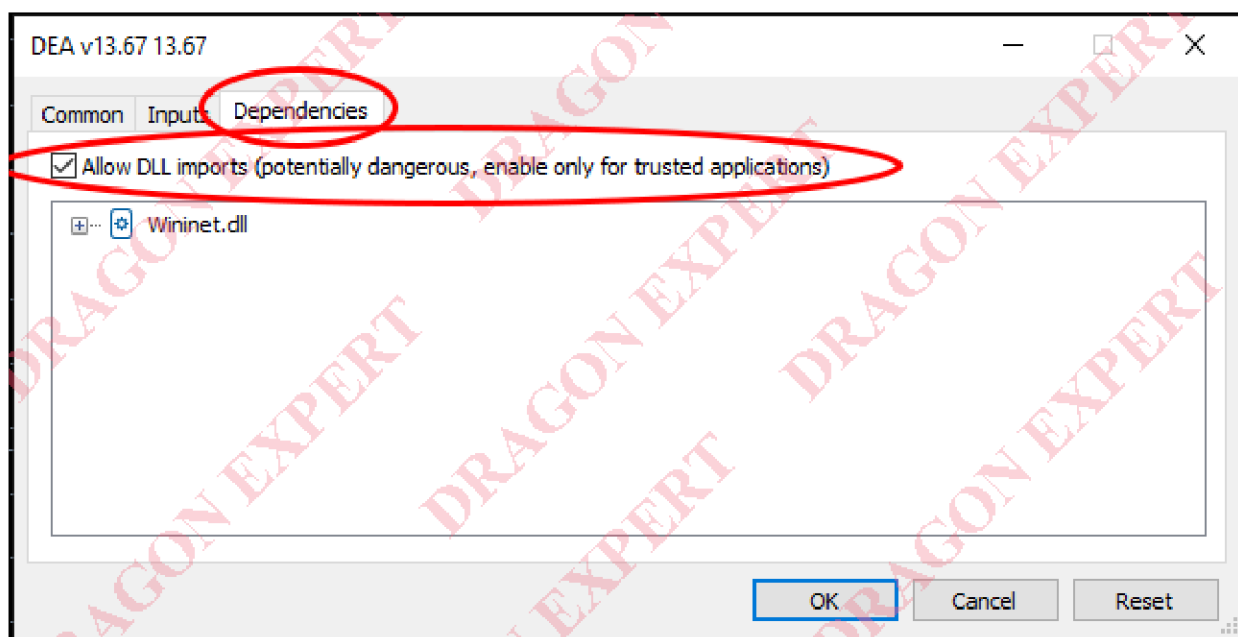
7. Attach Dragon Expert to your chart by right-clicking the Dragon Expert name and choose "Attach to a chart", or just drag Dragon Expert to your chart



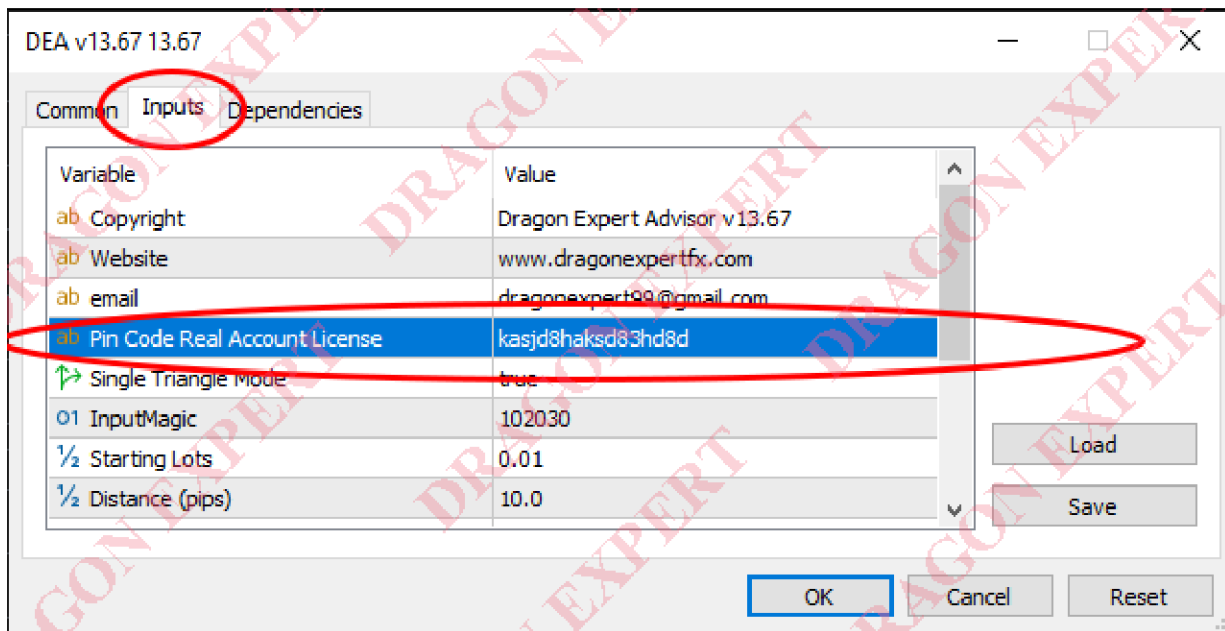
8. After the Expert Advisor Properties shows get into "Common" section -> check the "Allow Algo Trading" -> check "Allow Modification of Signals settings".



9. In Dependencies tab, check the "Allow DLL Imports"



10. IF YOU ARE USING "REAL ACCOUNT", insert your license .
Get into "Inputs" section -> Insert your license in "Pin Code Real Account License" box.



11. Click on toolbar to activate autotrading.



12. Restart your metatrader 5 If its necessary.

EXPERT ADVISOR MANUAL

1. Starting capital \$5000. I personally use default setting.
2. Attach on GBPUSD GBPJPY USDJPY with Lot 0.01. Attach on any timeframe.

3. Lot Rule

\$5,000 starting lot 0.01.

\$10.000 starting lot 0.02.

\$20.000 starting lot 0.03.

\$40.000 starting lot 0.04.

\$80.000 starting lot 0.05.

\$160.000 starting lot 0.06.

and go on (increase lot every 100% growth).

4. Conservative trade Run EA only in Sydney and Tokyo Session. Aggressive trade, Run EA 24 hours.

5. Withdraw Profit every day or every week. After return of investment, you can compounding every 100% growth.

High Risk, High Return.

SETTING

Magic -> Magic number for track order

Manual Lots -> fixed lot

Distance -> Distance per Open Position

Take Profit

Max Level Martingale -> to Limit trade on each buy/sell side

Level Risk -> ex:10. When martingale level above 10 level, EA is not waiting for TP, but override TP, when profit >\$1 EA will close all order.

Target Equity -> ex:10000. EA will close all order dan disable activity when target equity reach.

Virtual TP -> If there is too much request to broker server, set virtual TP to true.

Time Filter -> FALSE, time filter

Start -> 24 (broker time)

End -> 8 (broker time) 24-8(sydney-tokyo session +2 GMT)